

Client: 24Kannabis  
 Batch ID: 24K370

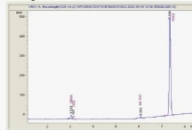
Sample 656-101823-034

Tropical Runtz  
 Sample Submitted: 10-18-2023; Report Date: 10-18-2023

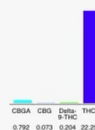
**Tropical Runtz**

Plant Material: Hemp Flower

Chromatogram



Cannabinoid Profile



Cannabinoid Profile by HPLC

**0.20%**  
 Delta-9-THC

**0.00%**  
 CBD

**23.33%**  
 Total Cannabinoids

Cannabinoid	% wt	mg/g
CBGA	0.792	7.92
CBG	0.073	0.73
Delta-9-THC	0.204	2.04
THCA	22.26	222.56
<b>Total Cannabinoids</b>	<b>23.33</b>	<b>233.3</b>
<b>Calculated Total THC</b>	<b>19.72</b>	<b>197.23</b>
<b>Calculated CBD Yield</b>	<b>0.00</b>	<b>0.00</b>
Calculated Total THC = Delta-9-THC + 0.877 * THCA		
Calculated Maximum CBD Yield = CBD + 0.877 * CBDA		

Marin Analytics, LLC  
 2500 16th Street, Suite 100  
 Novato, CA 94949  
 833-321-TEST / info@marinanalytics.com

*Mike Clemmons*  
 Lab Manager

This sample has been tested by Marin Analytics, LLC using state-of-the-art methods and a quality system. Values reported relate only to the sample tested. Marin Analytics, LLC makes no claims as to the efficacy, safety, or other risks associated with the use of any compounds reported herein. This Certificate shall not be reproduced except in full without the written approval of Marin Analytics, LLC. Copyright ©2023 Marin Analytics, LLC. All Rights Reserved.